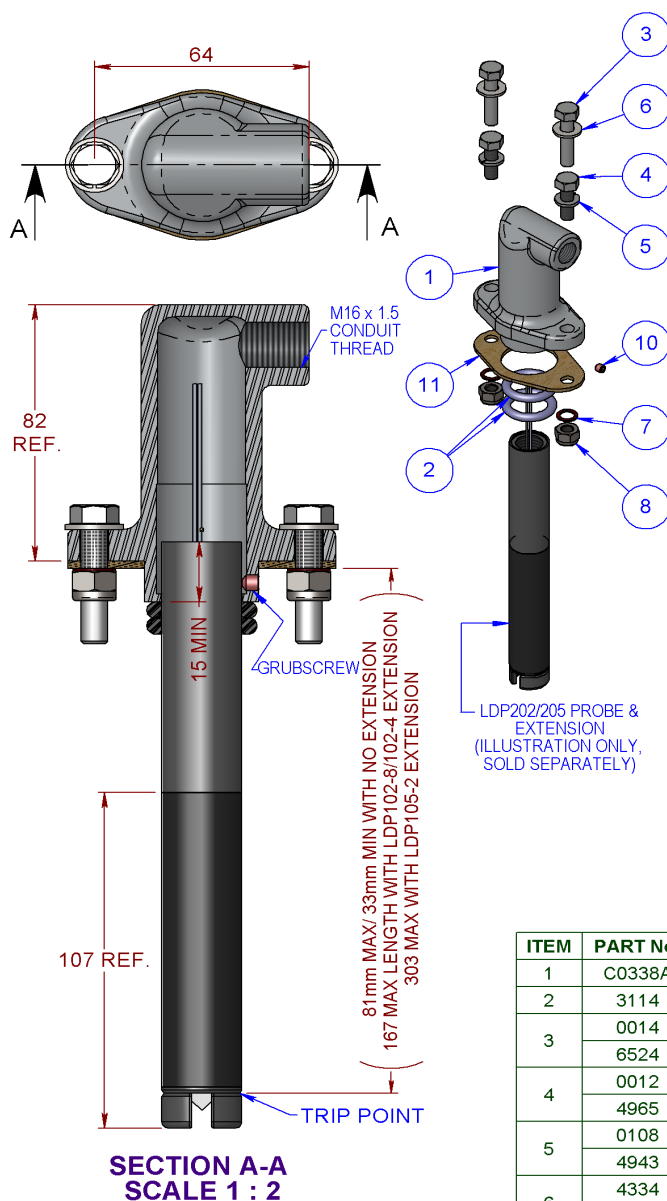


VOH200-5 & VOH200-5M KITS & INSTALLATION



LDP200 SERIES ASSEMBLY PROCEDURE:

1. INSTALL EXTENSION AS REQUIRED (REFER TO LDP INSTRUCTION LEAFLET P59005).
2. SLIDE THE 2 O-RINGS (3114) OVER THE PROBE TIP AND ABOVE THE TRIP POINT AS INDICATED BY THE GROOVE. POSITION THE GASKET BETWEEN THE HOUSING AND THE MOUNTING POINT (MANHOLE COVER OR VRB-13).
3. INSERT THE PROBE (TIP) INTO THE MOUNTING POINT (MANHOLE OR VRB-13) AND PUSH PROBE DOWN TO THE DESIRED TRIGGER POINT. TOP OF THE PROBE MUST BE 15mm MIN ABOVE THE O-RINGS. FOR LOWER SETTINGS AN EXTENSION MUST BE USED.

NOTE: HOLD ONTO THE PROBE WIRES AND TAKE CARE NOT TO DAMAGE TIP OR DROP PROBE.

4. CAREFULLY REMOVE THE PROBE FROM THE MOUNTING POINT AND SLIDE DOWN THE O-RINGS 3mm TOWARDS THE TIP TO ALLOW FOR O-RING BEDDING. ENSURE O-RINGS ARE STRAIGHT.
5. THREAD THE PROBE WIRES THROUGH THE VOH200-5 HOUSING WITH THE WIRES COMING OUT OF THE ENTRY AND SLIDE THE PROBE INTO THE HOUSING, TAKING CARE NOT TO DISTURB THE O-RINGS.
6. TIGHTEN GRUBSCREW (55056) TO APPROX 1Nm.
7. FIT THE 2 BOLTS WITH WASHERS AND TIGHTEN EVENLY TO A TORQUE OF 15-20 Nm.
8. CHECK THE PROBE HEIGHT.

NOTES:

1. WHEN MOUNTING USE APPROPRIATE FASTENERS FROM KIT (i.e. TO SUIT TAPPED OR THROUGH HOLES), DISCARD REMAINDER.
2. GRUBSCREW IN KIT IS FOR POSITIONING PROBE HEIGHT AND FOR LDP PROBE ATEX INSTALLATION REQUIREMENTS.
3. USE VRB-13 MOUNTING BASE IF NOT MOUNTING DIRECTLY TO A MANHOLE COVER.

ITEM	PART No.	DESCRIPTION	VOH200-5	VOH200-5M	MATERIAL
1	C0338A	BOX JUNCTION	1	1	ALUMINIUM
2	3114	O-RING	2	2	NITRILE
3	0014	SETSCREW HEX	2	-	Z/P STEEL
	6524	BOLT METRIC	-	2	Z/P STEEL
4	0012	SETSCREW HEX	2	-	Z/P STEEL
	4965	BOLT METRIC	-	2	Z/P STEEL
5	0108	WASHER SPRING	2	-	Z/P STEEL
	4943	WASHER SPRING	-	2	Z/P STEEL
6	4334	WASHER FLAT	2	-	Z/P STEEL
	6667	WASHER FLAT	-	2	Z/P STEEL
7	4341	WASHER FIBRE	2	-	FIBRE
	5390	WASHER FIBRE	-	2	FIBRE
8	0149	NUT NYLOC	2	-	Z/P STEEL
	4395	NUT NYLOC	-	2	Z/P STEEL
9	6403	INSTRUCTION LEAFLET	1	1	PAPER
10	55056	GRUBSCREW CUP POINT	1	1	ST STEEL
11	3097	GASKET	1	1	NBR CORK

METERS - VALVES - VENTS - MANHOLES - HOSEREELS - OVERFILL PROTECTION - LOADING ARMS - ELECTRONIC DIPSTICKS



LIQUIP INTERNATIONAL PTY LTD

13 HUME ROAD SMITHFIELD SYDNEY N.S.W. AUSTRALIA 2164

Phone: +61 2 9725-9000 Web: www.liquip.com

X752314

Sheet 1 of 1
Issue: B